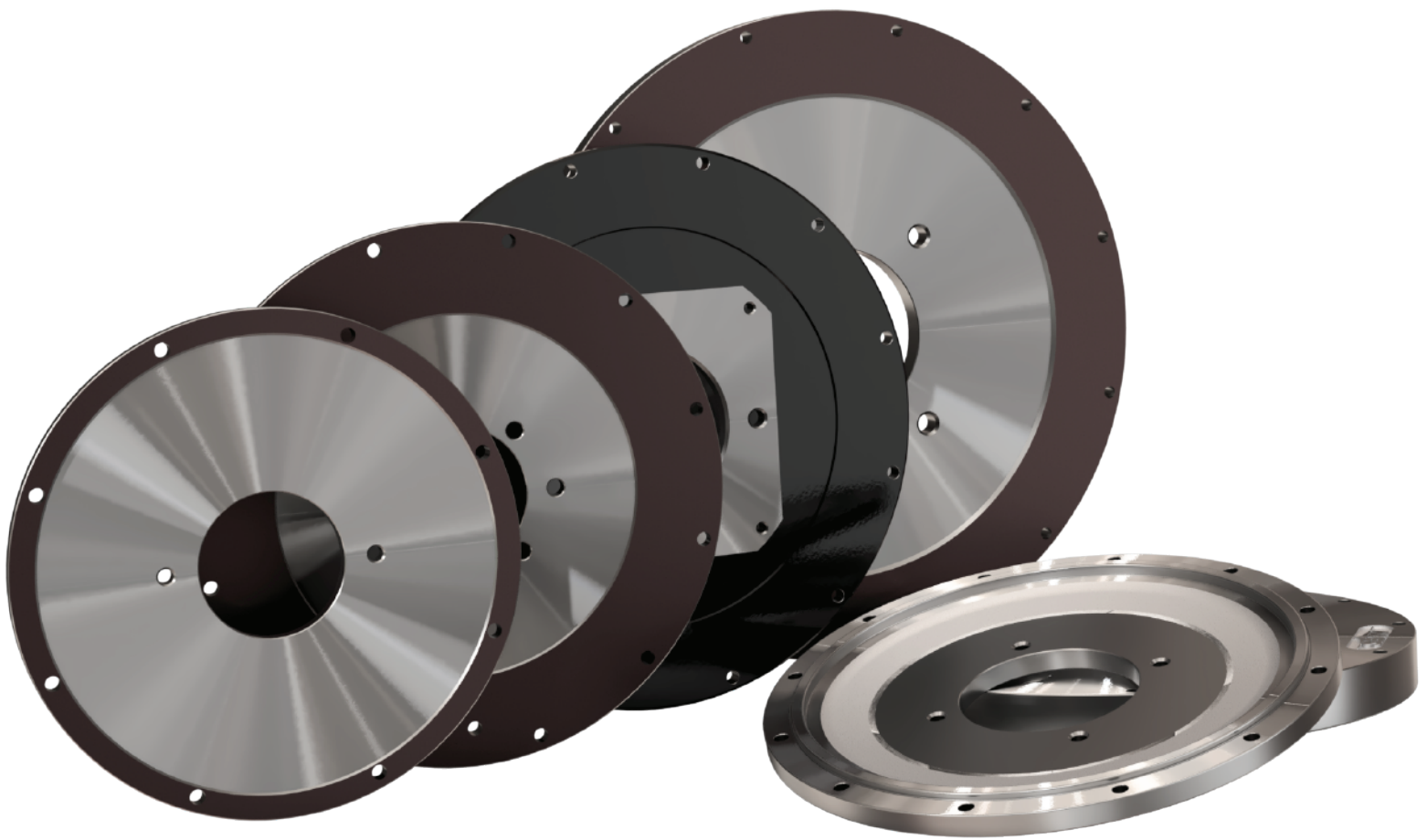


PUMP MOUNTING PLATES



Hayes Manufacturing, Inc.

6875 US Highway 131

Fife Lake, MI 49633

Phone: 231-879-3372 | Fax: 231-879-4330

www.hayescouplings.com

HAYES[®]

We've Got Connections

POWER
TRANSMISSION
PRODUCTS

Pump Mounting Plates

Hayes Pump Mounting Plates are designed to carry your toughest loads. Our customers hang pumps, motors, blowers, gearboxes, and many other driven components from our pump mounting plates. They are machined to give you maximum thread engagement and can be customized for your specific application.

Design Characteristics:

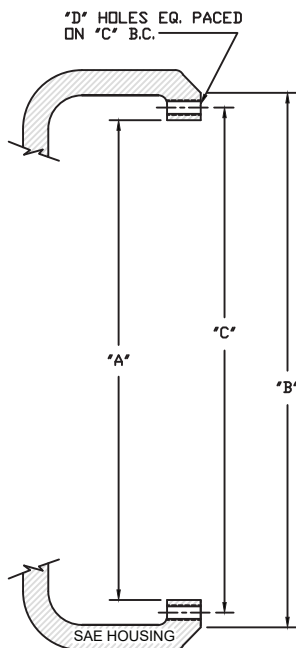
Features and Advantages:

- Sturdy, steel plate for continuous load support.
- Multiple thickness options
- Yellow zinc plating available
- Black zinc plating available
- Custom painted available

Applications:

- Aerial lifts • bucket loaders • skid-steer loaders • excavators • sweepers • wheeled loaders and more.
- Consult factory for applications not listed

Dimensional Information:



HAYES SAE PUMP MOUNTING PLATE DIMENSIONS						
HOUSING SIZE	"A" PILOT	"B" O.D.	"C" B.C.	PLATE THICKNESS	"D" MOUNTING PLATE HOLES	
					# OF HOLES	SIZE
1	20.125	21.750	20.875	1" OR 5/8"	12	31/64
2	17.625	19.250	18.375	1" OR 5/8"	12	27/64
3	16.125	17.750	16.875	5/8"	12	27/64
4	14.250	15.880	15.000	5/8"	12	27/64
5	12.375	14.000	13.130	5/8"	8	27/64
6	10.500	12.120	11.250	5/8"	8	27/64

Use the chart below to find the part number of the pump mount plate required for your application

HAYES PART #	PLATE INFORMATION		PUMP INFORMATION		HAYES PART #	PLATE INFORMATION		PUMP INFORMATION	
	SAE HOUSING	THICKNESS	SAE PUMP PILOT	BOLT PATTERN		SAE HOUSING	THICKNESS	SAE PUMP PILOT	BOLT PATTERN
123008-AO2	1	1"	B	2-BOLT	123008-DN2	3	5/8"	A	2-BOLT
123008-AX2	1	1"	C	2-BOLT	123008-DO2	3	5/8"	B	2-BOLT
123008-AS2	1	1"	D	2-BOLT	123008-DX2	3	5/8"	C	2-BOLT
123008-AT2	1	1"	E	2-BOLT	123008-DS2	3	5/8"	D	2-BOLT
123008-AU2	1	1"	F	2-BOLT	123008-DO4	3	5/8"	B	4-BOLT
123008-AX4	1	1"	C	4-BOLT	123008-DX4	3	5/8"	C	4-BOLT
123008-AS4	1	1"	D	4-BOLT	123008-DS4	3	5/8"	D	4-BOLT
123008-AT4	1	1"	E	4-BOLT	123008-DT4	3	5/8"	E	4-BOLT
123008-AUR	1	1"	F	4-BOLT	123008-DU4	3	5/8"	F	4-BOLT
123008-BO2	2	1"	B	2-BOLT	123008-EN2	4	5/8"	A	2-BOLT
123008-BX2	2	1"	C	2-BOLT	123008-EO2	4	5/8"	B	2-BOLT
123008-BS2	2	1"	D	2-BOLT	123008-EX2	4	5/8"	C	2-BOLT
123008-BT2	2	1"	E	2-BOLT	123008-ES2	4	5/8"	D	2-BOLT
123008-BU2	2	1"	F	2-BOLT	123008-ET2	4	5/8"	E	2-BOLT
123008-BX4	2	1"	C	4-BOLT	123008-EO4	4	5/8"	B	4-BOLT
123008-BS4	2	1"	D	4-BOLT	123008-EX4	4	5/8"	C	4-BOLT
123008-BT4	2	1"	E	4-BOLT	123008-ES4	4	5/8"	D	4-BOLT
123008-BU4	2	1"	F	4-BOLT	123008-GN2	5	5/8"	A	2-BOLT
123008-CN2	2	5/8"	A	2-BOLT	123008-GO2	5	5/8"	B	2-BOLT
123008-CO2	2	5/8"	B	2-BOLT	123008-GX2	5	5/8"	C	2-BOLT
123008-CX2	2	5/8"	C	2-BOLT	123008-GO4	5	5/8"	B	4-BOLT
123008-CS2	2	5/8"	D	2-BOLT	123008-GX4	5	5/8"	C	4-BOLT
123008-CT2	2	5/8"	E	2-BOLT	123008-HN2	6	5/8"	A	2-BOLT
123008-CU2	2	5/8"	F	2-BOLT	123008-HO2	6	5/8"	B	2-BOLT
123008-CO4	2	5/8"	B	4-BOLT	123008-HO4	6	5/8"	B	4-BOLT
123008-CX4	2	5/8"	C	4-BOLT					
123008-CS4	2	5/8"	D	4-BOLT					
123008-CT4	2	5/8"	E	4-BOLT					
123008-CU4	2	5/8"	F	4-BOLT					